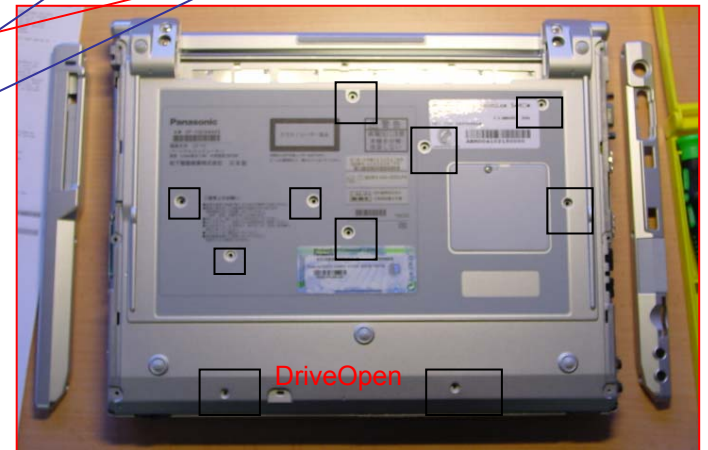
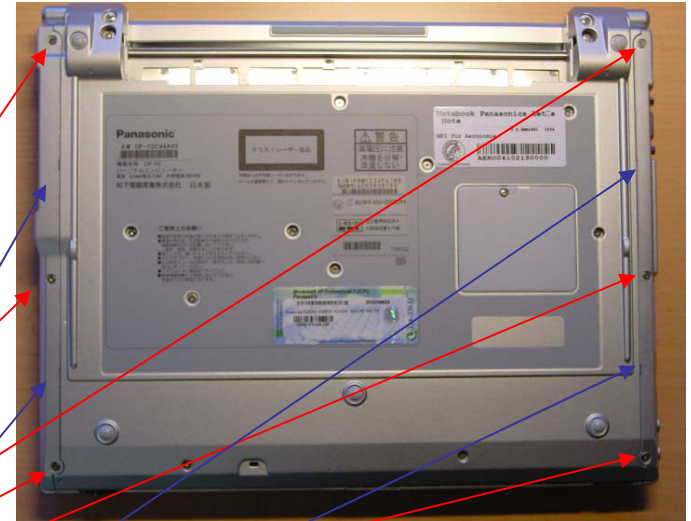


Panasonic CF-Y2 Harddisk Exchange

similar for CF-R2,CF-W2,CF-R3

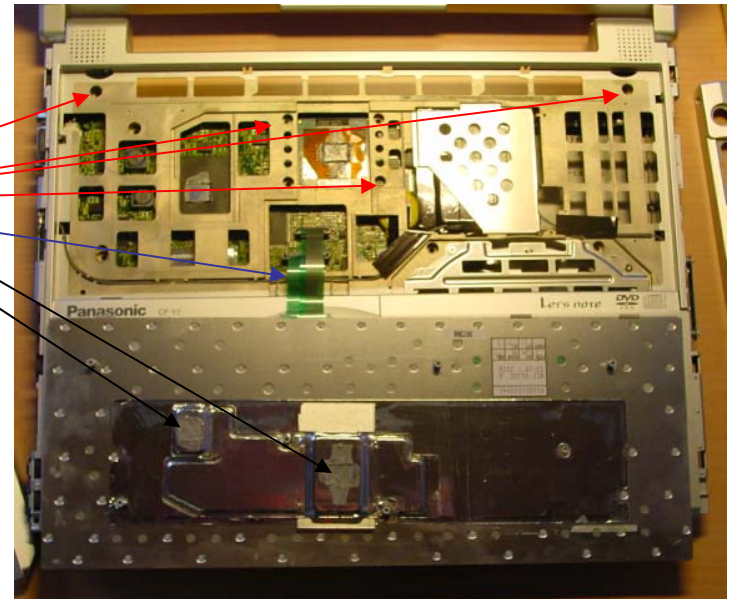
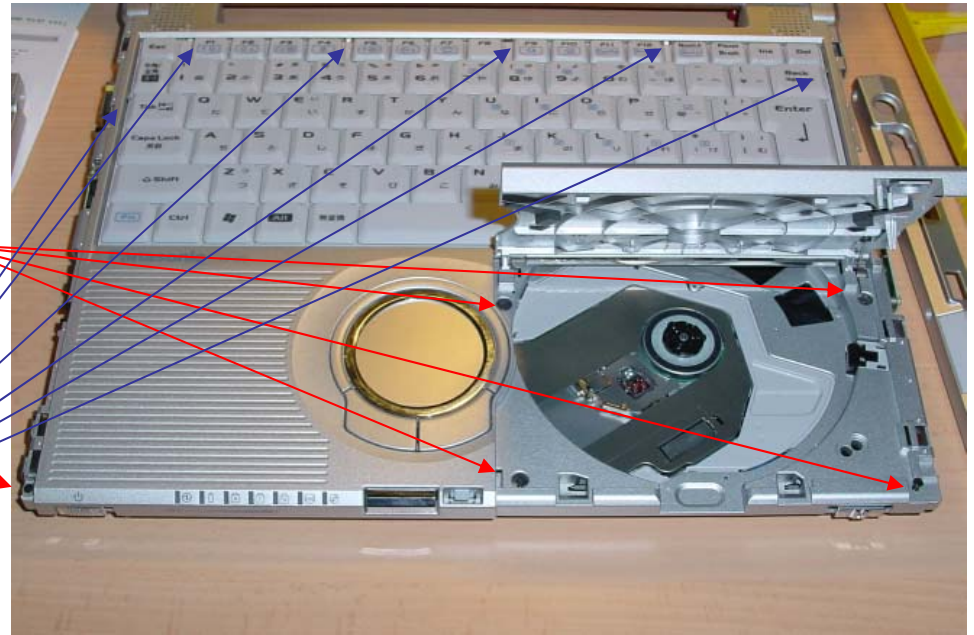
To exchange the harddisk of a Panasonic Toughbook CF-Y2 do:

1. Buy harddisk of Toshiba MK type, e.g. the MK1031GAS 100GB version, must not be specific 3.3 Volt version.
2. Get a set of electronic screw drivers and fine nippers.
3. Make back-up of your harddrive, specifically drivers. You will NOT be able to copy the HDD externally because of the 3.3 Volt usage.
3. Take out battery, turn unit on back.
4. Unscrew 6 outer rim screws.
5. Take off side-panels by carefully lifting with flat screwdriver from back side.
6. Unscrew the 10 small screws on backside – NOT yet the big hinge screws!



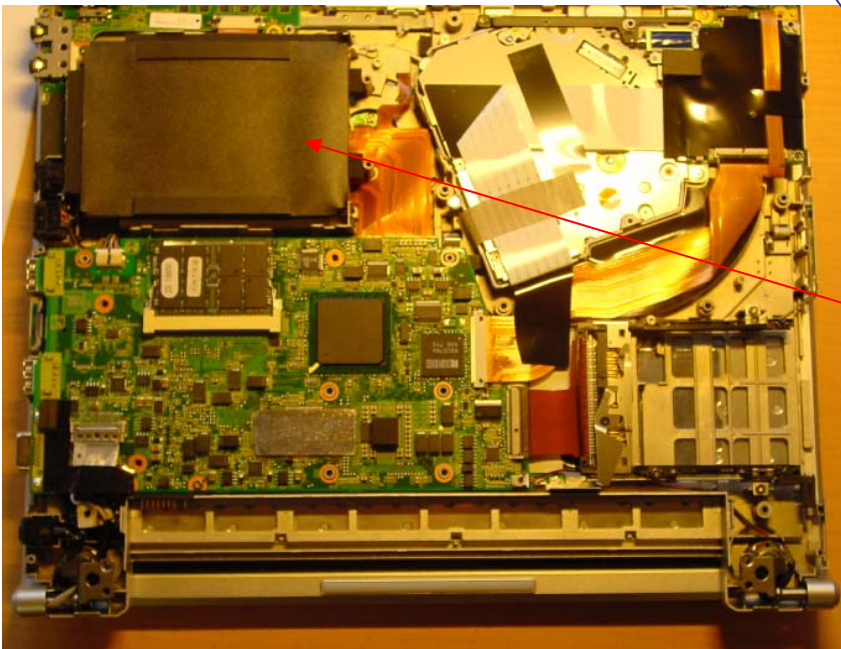
Panasonic CF-Y2 (part2)

7. Open drive, using the DriveOpen switch on backside.
8. Unscrew 4 black screws in DriveBay – you may leave loose screws in place. Close DriveBay.
9. Unscrew black screw in lower left corner.
10. Using flat screw driver, CAREFULLY lift keyboard above keyboard clips.
11. Check that heat conducting glue under keyboard slowly releases the keyboard.
12. Turn over keyboard carefully.
13. Unscrew 5 black screws under keyboard – don't loose them.



Panasonic CF-Y2(part3)

14. Close keyboard without letting the clips snap.
15. Turn over unit, unscrew two serial socket screws with nippers.
16. Unscrew 4 big hinge screws.
17. Carefully take off bottom of unit.



18. Carefully lift harddrive from bay.
19. Carefully remove plastic cover.
20. Using fine flat screw driver, remove Harddrive from socket.

Panasonic CF-Y2(part4)



21. Take new harddrive and turn such that metal lid is on bottom side.

22. Either bend or clip completely pins 41 and 44. This should make your disk 3.3 Volt compatible.



23. Put new harddrive back on socket – metal lid towards unit.

24. Put back black plastic around harddrive.

25. Put back in place bottom cover of unit.

Check that PCMCIA button is straight!

26. Rescrew everything in reverse order.

DONE